

Handwritten text in a dark ink on a light-colored, textured surface. The text is arranged in two lines. The top line consists of a single, long, slightly curved stroke. The bottom line consists of several distinct characters or symbols, including a vertical bar, a wavy shape, a circular shape with a central dot, a vertical bar, and another vertical bar.



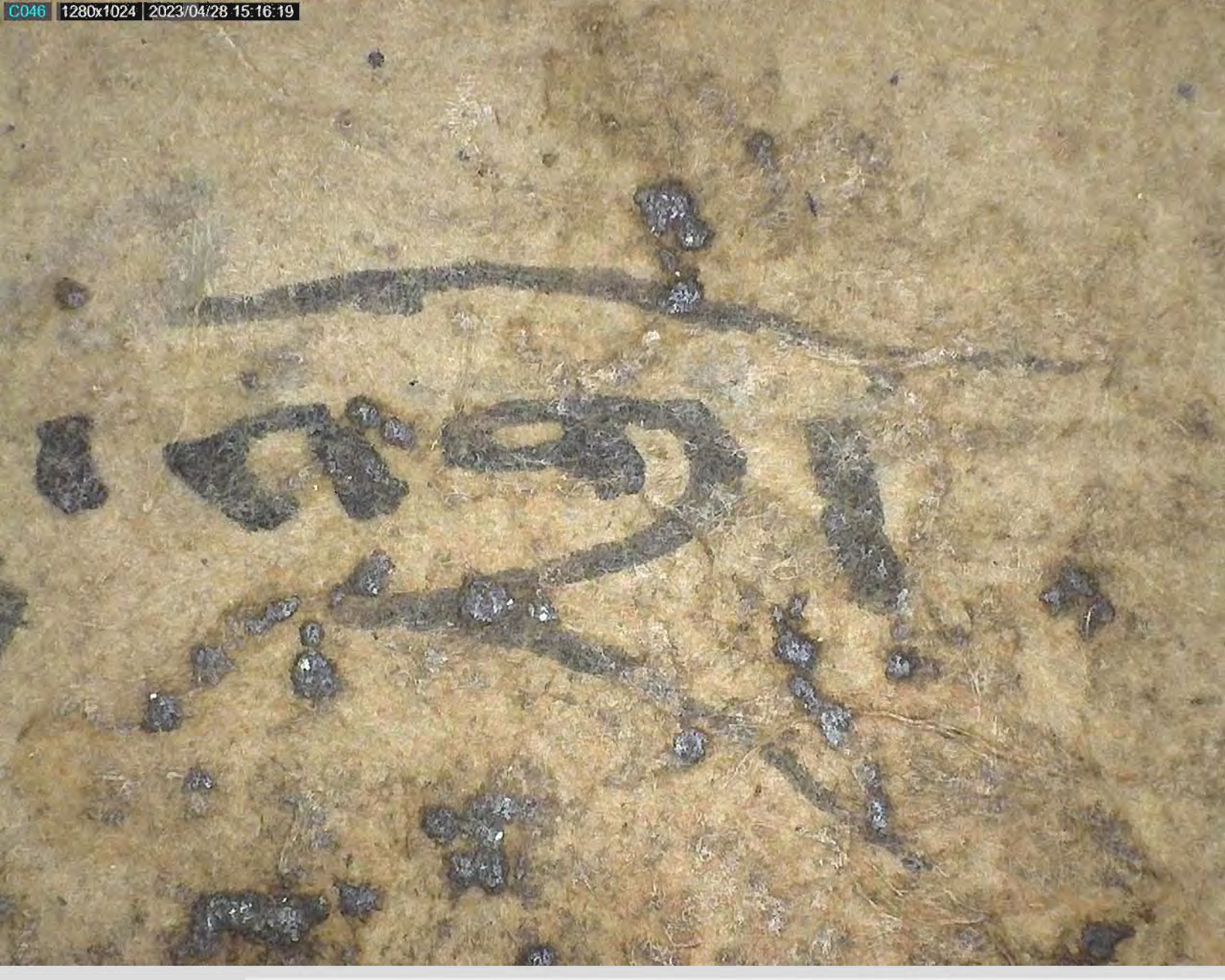
Handwritten text in a dark ink on a light-colored, textured surface. The text is written in a cursive style and appears to be a name or a short phrase. The characters are somewhat stylized and difficult to decipher precisely, but they resemble a mix of Latin and possibly other characters. The text is oriented horizontally across the middle of the page.

Handwritten characters in a dark ink on aged paper, possibly representing a date or a specific mark.

Handwritten characters in a dark ink on aged paper, possibly representing a date or a specific mark.

















8





